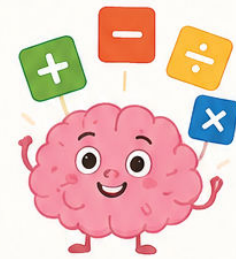




UNDERSTANDING DYSCALCULIA



Signs, Causes, and Hope for Struggling Math Learners



WHAT IS DYSCALCULIA?

A learning disability that affects understanding numbers, math facts, calculations, and mathematical reasoning.



COMMON SIGNS

- Difficulty learning math facts
- Counting errors
- Trouble understanding quantity
- Poor number sense
- Difficulty telling time
- Problems with mental math
- Weak visual-spatial skills
- Math anxiety

DYSCALCULIA IS NOT:

- Laziness
- Low intelligence
- Poor teaching alone
- Lack of effort

OFTEN INVOLVES DIFFICULTIES WITH:

- Working memory
- Visual memory
- Sequencing
- Attention
- Processing speed
- Spatial reasoning

THE GOOD NEWS

With the right intervention, many students can improve:

- Math understanding
- Confidence
- Processing skills
- Academic performance



EFFECTIVE SUPPORT MAY INCLUDE:

Structured math intervention

Cognitive training

Visual-spatial activities

Step-by-step instruction

Repetition and practice

Individualized tutoring



BUT IT IS NEVER
too late.



THERE IS HOPE.

With understanding, support, and the right strategies, every learner can thrive.



BOOK A FREE CONSULTATION

Let's work together to help your child build skills, confidence, and success in math.



EDUBLOX ONLINE TUTOR

www.edubloxtutor.com